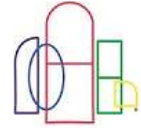


Allied Window Inc. S.A.W. (Slide-A-Way)

INSTALLATION INSTRUCTIONS (800) 445-5411



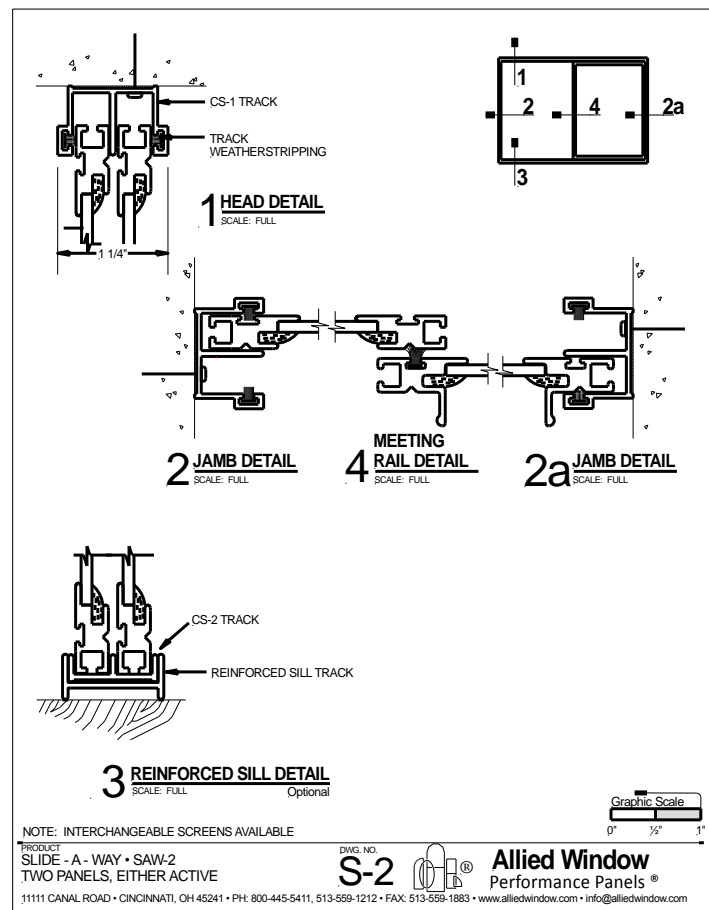
Window Identification: All window units are identified with a steel stamping into the aluminum frames. They are stamped in the lower left hand corner of the frames. The S.A.W. (slide-a-way) tracks are stamped inside of the extrusions. Each opening requires (1) CS-1 head, (2) CS-1 jambs and (1) CS-2 Vinyl sill. Please layout all components to make sure order is complete.

Tools Needed: Tape measure, pencil, 3/32" drill bit, drill or battery drill, and a fresh # 2 Phillips tip.
(Mounting to drywall or plaster requires 3/16" masonry bit and 3/16" plastic plugs not supplied)

Opening Preparation: Make sure that the mounting surface is free of nails, staples, screws, or excess old caulking.

Standard Installation: Mounting the permanent channels takes a few basic steps.

- 1) **Head:** Determine location of the storm window. Measure the same distance out from the existing window and mark location of head and jambs. Mount head in place with the foam tape towards the wall or molding. Anchor in place with the # 6 X 1" flathead screws. (Pre-drill with 3/32" drill bit if necessary). **Make sure not to twist head or jamb track when anchoring.**
- 2) **Jambs:** A-line jambs under head. Anchor in place with # 6 X 1" flathead screws. (Pre-drill with 3/32" drill bit if necessary)
- 3) **Sill:** Install the sill track by inserting the tongue into the jamb track. (No need to anchor sill, the foam tape will keep it from sliding).



Installing the slide-a-way panels:

The rear slide-a-way panel (plain w/o handle) can now be inserted into the upper track and lowered into the vinyl sill track. After the rear panel in the front handle panel can now be inserted. (NOTE: The wool pile weather-stripping in the back of the handle panel must be in the center of opening.)